



Spring Meeting
Wednesday 17 April 2024

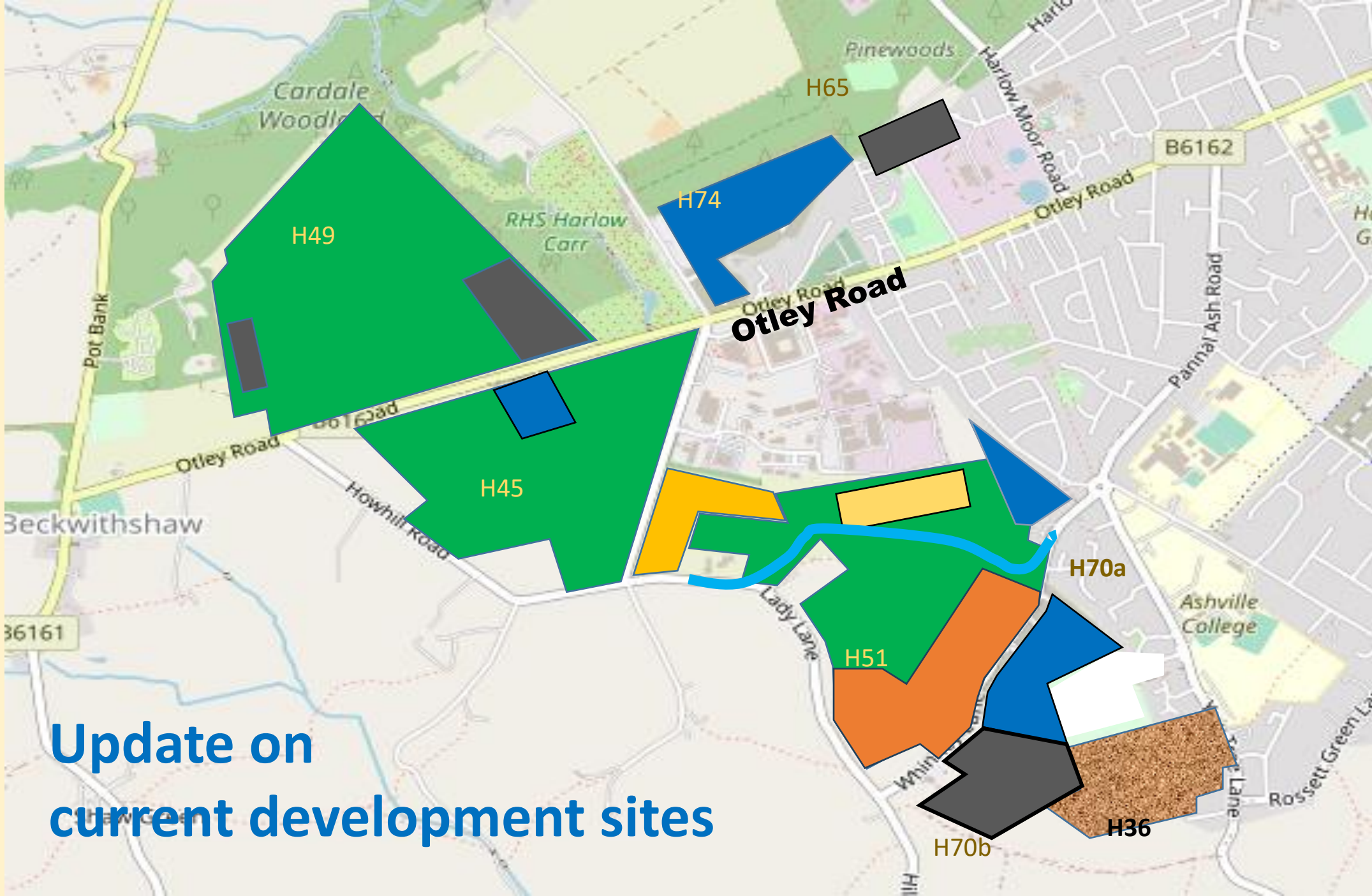
Welcome



René Dziabas
Chairman

AGENDA

1. Welcome and Introductions
2. Update on Current Development Sites
3. West Harrogate Infrastructure Update
4. Otley Road Sustainable Transport Package
5. Update on 20mph campaign
6. Potholes
7. Parking on Yew Tree Lane
8. Otley Road Cycleway Scheme
9. Community matters - buses, Green Hut
10. Treasurer's report and membership update
11. Future Of HAPARA
12. Audience Questions



**Update on
current development sites**

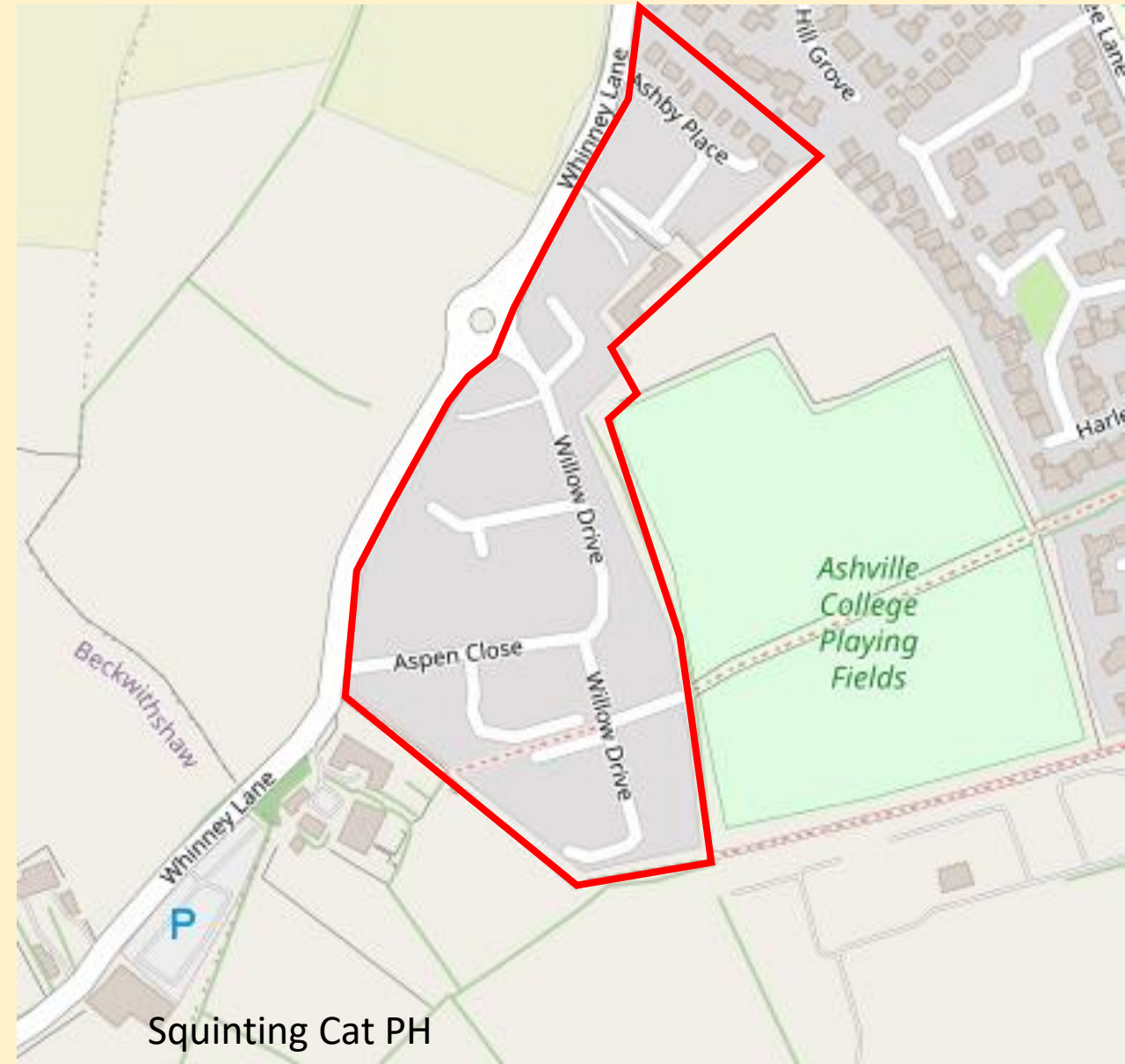
Police College Site, Yew Tree Lane

- Reserved matters application approved February 2024
- Layout, appearance, access, etc. 200 dwellings
- Vistry in process of acquiring the site
- Discharge of conditions process to start thereafter
- Promise of consultation



Stonebridge, Whinney Lane

- Stonebridge: completion September 2023 ???
- Final surfacing
- Street lighting
- Hedge replacement
- Landscaping
- Dog bins
- Reinstatement of public footpaths



Squinting Cat PH

H51 (part): Banks development, Whinney Lane



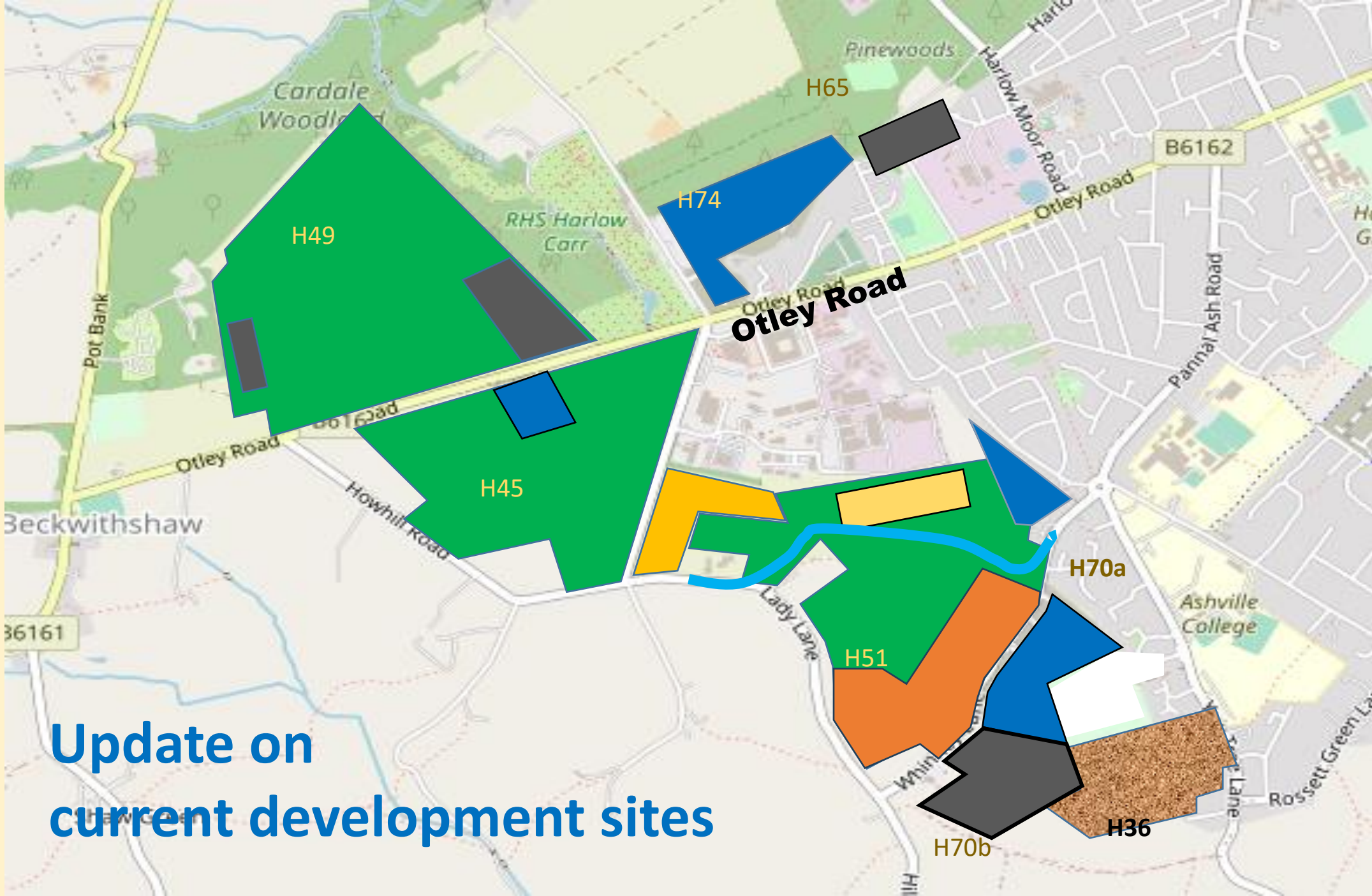
Application submitted June 2020

Amended application – September 2023

Further amendments – March 2024

Not determined

Awaiting Transport Assessment



**Update on
current development sites**

West Harrogate Infrastructure Update

Mitigation Measures

Cumulative Transport Assessment

Mitigation Measures

July 2022: First draft - 18 locations

Sept 2023: See Cumulative
Transport Strategy

Infrastructure Delivery Schedule

Cumulative Transport Assessment

Summary of Proposed Junction Mitigation

Otley Road

July 2022

Junction Ref	Junction Description / Location	Mitigation Proposed
SJ16/17	Otley Road/Cold Bath Road/Pannal Ash	Proposals being suggested include widening on Cold Bath Road and Pannal Ash Road and / or Otley Road Intelligent Signals Corridor approach being considered.
SJ19	Otley Road / Beckwith Road	Signalisation - consider introduction of MOVA to improve efficiency. Otley Road Intelligent Signals Corridor approach being considered.
SJ20	Otley Road/Beckwith Head Road	Proposals under consideration include: Left turn lane from Beckwith Head Road and a right turn lane introduced on the Otley Road western arm. Toucan crossings on Otley Road and Crag Lane arms Potential widening of Beckwith Head Road junction to accommodate shared use pedestrian / cycle route to the proposed toucan crossing. Otley Road Intelligent Signals Corridor approach being considered.
SJ21	Otley Road/Howhill Road	A new four arm signalised junction to be provided. Otley Road Intelligent Signals Corridor approach being considered.
SJ22	Otley Road/ Pot Bank	New, larger and repositioned roundabout junction.

Mitigation Measures

July 2022: First draft - 18 locations

Sept 2023: See Cumulative
Transport Strategy

Infrastructure Delivery Schedule

What? When? How much?

To be agreed at NYC Executive
13 April 2024. CANCELLED

Cumulative Transport Assessment

Mitigation Measures

July 2022: First draft - 18 locations

Sept 2023: See Cumulative
Transport Strategy

Infrastructure Delivery Schedule

What? When? How much?

To be agreed at NYC Executive
13 April 2024. CANCELLED

Cumulative Transport Assessment

Produced by developers

To be delivered alongside
planning applications

April 2024: Imminent?

NPIF/Otley Road Sustainable Transport Update

17th April 2024

Introduction –

Jasmin Gibson Improvement Project Delivery Manager Area 6

Responsible for delivering Active Travel schemes
around Harrogate District

Current Projects

- Oatlands Drive/Wetherby Road Crossings
 - Consultation between 25th March – 14th April
- Victoria Avenue ATF2
 - Consultation 15th April – 5th May
- Wider Oatlands Drive Scheme
 - 20mph traffic calming options being developed for future consultation
 - Options to improve cycle connectivity to junctions with York Place and Hookstone Road being explored
 - Prioritising crossings for now – further active travel improvements to be developed in the future

NPIF Update

Background

- Decision taken in February 2023 to re-allocate remaining NPIF funds to develop scheme of “Sustainable Transport Measures” in line with NPIF Objectives
- Aim is to create quieter/safer streets to encourage walking and cycling
- Developed collaboratively by NYC officer working group across Highways service area with input from HAPARA & HDCCA along with Road Safety Groups with input from local schools
- 10 measures identified for further development, presented in report at September Harrogate & Knaresbrough ACC

• Sub-projects

Ref	Title	Description	Value
1	Cold Bath Road Signal Upgrades	Link signals to previously upgraded signals at Pannal Ash Road to increase capacity	200,000
2	Otley Road Bus Stop Upgrades	Improve facilities/accessibility around bus stops and reflect changes in bus service	75,000
3	Cold Bath Road 20mph	Reduce speed and enhance local environment to encourage walking wheeling and cycling	100,000
4	Improve Access Arrangements Near Falcon Chiropratic	Improve accessibility around crossing point by relocating infrastructure. Installation of raised table to calm traffic.	5,000
5	Crossing Point Near Western Primary School	Provide safer crossing near school and act as traffic calming	10,000
6	Improved crossing at PROW on Green Lane nr Ashville College	Improve visibility for pedestrians and cyclists emerging from the bridleway	10,000
7	Review Cycle Path Signing	Improve awareness of cycle routes across the network in Harrogate	25,000
8	Harrogate Grammar 20mph	To reduce speed outside the school and to enhance the local environment by making the streets feel safer	75,000
9	Improved Cycle Parking/Public Realm CBR	To enhance the local area and provide facilities to promote active travel.	10,000
10	Patching/Resurfacing Rosset Cycle Path	To improve the surface to remove potential tripping hazards for pedestrians and cyclists	10,000

- Current Status

Ref	Title	Description
1	Cold Bath Road Signal Upgrades	Liaising with procurement on acquiring appropriate signals infrastructure
2	Otley Road Bus Stop Upgrades	Site visit attended to clarify requirements with IPT
3	Cold Bath Road 20mph	APS preparing designs at present ready for consultation
4	Improve Access Arrangements Near Falcon Chiropratic	APS preparing designs at present ready for consultation
5	Crossing Point Near Western Primary School	APS preparing designs at present ready for consultation
6	Improved crossing at PROW on Green Lane nr Ashville College	Design not yet developed
7	Review Cycle Path Signing	Linked with cycle priority work lead by Transport Planning
8	Harrogate Grammar 20mph	Per HY update, counts and speed surveys currently underway to inform TM design
9	Improved Cycle Parking/Public Realm CBR	APS preparing designs at present ready for consultation & planning application
10	Patching/Resurfacing Rosset Cycle Path	Area team have prepared designs and costings

• Next Steps

Ref	Title	Description
1	Cold Bath Road Signal Upgrades	Procure equipment and set program for delivery
2	Otley Road Bus Stop Upgrades	Form works orders, procure equipment and set program for delivery, notify residents
3	Cold Bath Road 20mph	Consult on scheme once design finalised
4	Improve Access Arrangements Near Falcon Chiropractic	Consult on scheme once design finalised
5	Crossing Point Near Western Primary School	Consult on scheme once design finalised
6	Improved crossing at PROW on Green Lane nr Ashville College	Consult on scheme once design finalised ideally along with wider traffic calming
7	Review Cycle Path Signing	Site visit with Transport Planning and HDCA in May
8	Harrogate Grammar 20mph	Consult on scheme once design finalised
9	Improved Cycle Parking/Public Realm CBR	Consult on scheme once design finalised, submit planning application if proposals supported
10	Patching/Resurfacing Rosset Cycle Path	Finalise program – expected delivery in summer, included within capital program

Future Updates:

30 May: Harrogate and Knaresborough Area Constituency Committee
– Further update with more information on program and updated costings

July: BES Exec – Authorisation to Tender works, consult on TRO's

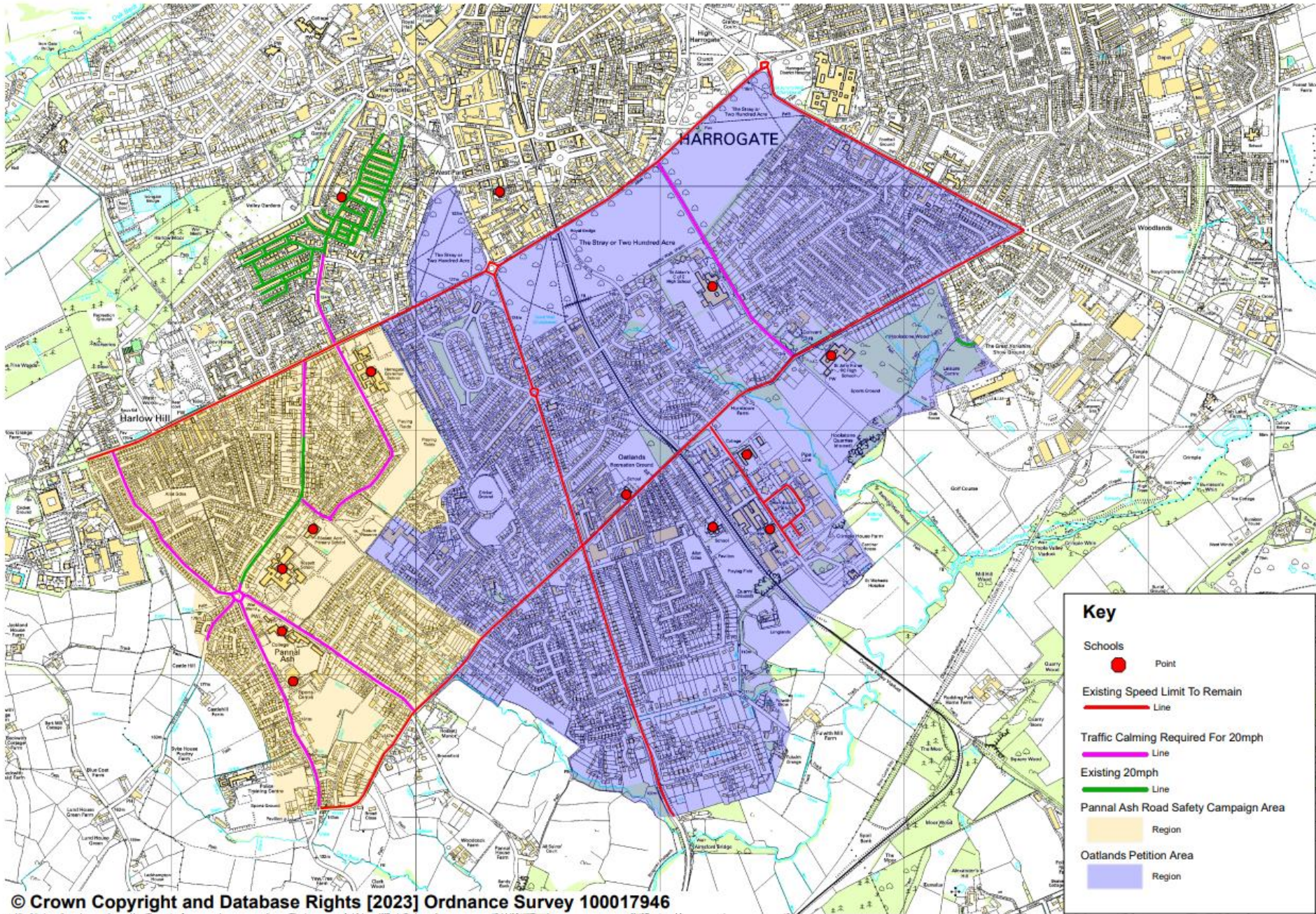


20mph Project Implementation

17th April 2024

Introduction –

Heather Yendall - Improvement Manager Area 6



Work done to date

- Approval to take the proposal forward to delivery was obtained in December 2023
- Speed surveys ongoing – final tranche of surveys will run into early May
- Analysis ongoing on speed data from various sources
- Drawings being developed for some of the schemes requiring traffic calming and drawings in preparation for consultations/advertisements

Timetable - May

Current timetable for implementation

May
Full speed survey assessment to identify further engineering requirements and draft design finalisation
Engage with Traffic Engineering and North Yorkshire Police on proposals to gain informal view before formal Traffic Regulation Order (TRO)
Preparation of draft TROs and notice of proposals for traffic calming. Also preparation consultation material
Late May - - Pre-advertising TRO consultation with Police, Local Members in affected Divisions, RHA/ Logistics.co.uk, Fire & Ambulance – 2 weeks

Timetable - June

Current timetable for implementation

June
Full consultation with residents on directly affected streets to seek views/comments. 3 week consultation from early June
Late June – assess consultation comments /designs. If broad support for measures we will request Legal advertise TROs and traffic calming proposals
Prepare works orders for signing etc. to allow for delivery timescales from manufacturers

Timetable - July

Current timetable for implementation

July
TRO to be advertised early July 2024 – 3 week duration
If no objections received – seal TROs and install T/Calming as part of R&R schemes
If objections are received, may need report to the Area Constituency Committee due to it being a wide impact TRO – this will be prior to a report to Environment Executive Members

Future Updates

- 30th May: Harrogate and Knaresborough Area Constituency Committee
- Further update to the Committee on progress and indicative timescales



**Please support the 20mph
scheme to make our area
safer for all:**

- **Respond to the
consultation**
- **Spread the word**

Potholes



Pannal Ash Road



REPORT A POTHOLE

www.northyorks.gov.uk/

Roads, parking and travel

Roads and pavements

Potholes and road
Condition issues

Potholes and road condition issues

Report a non-urgent pothole or damaged road surface online and view details about how we maintain our roads.

Do it online

[Report a pothole or road condition issue](#)

If you prefer, you can [tell us about a pothole or road condition issue anonymously](#), but you will miss out on the benefits of having an account such as [getting progress updates](#).

Not all roads are our responsibility

Motorways and trunk roads such as the A1, A1(M), M62, A66, A66(M), A64, A168 (Dishforth to Thirsk) and A19 (north of Thirsk) must be reported to [National Highways](#).

In an emergency

If it's an **emergency** and poses a safety risk, [contact us](#). Out of office hours, call North Yorkshire Police on [101](#). If there is danger to life, call [999](#).

Parking on Yew Tree Lane



Parking on Yew Tree Lane

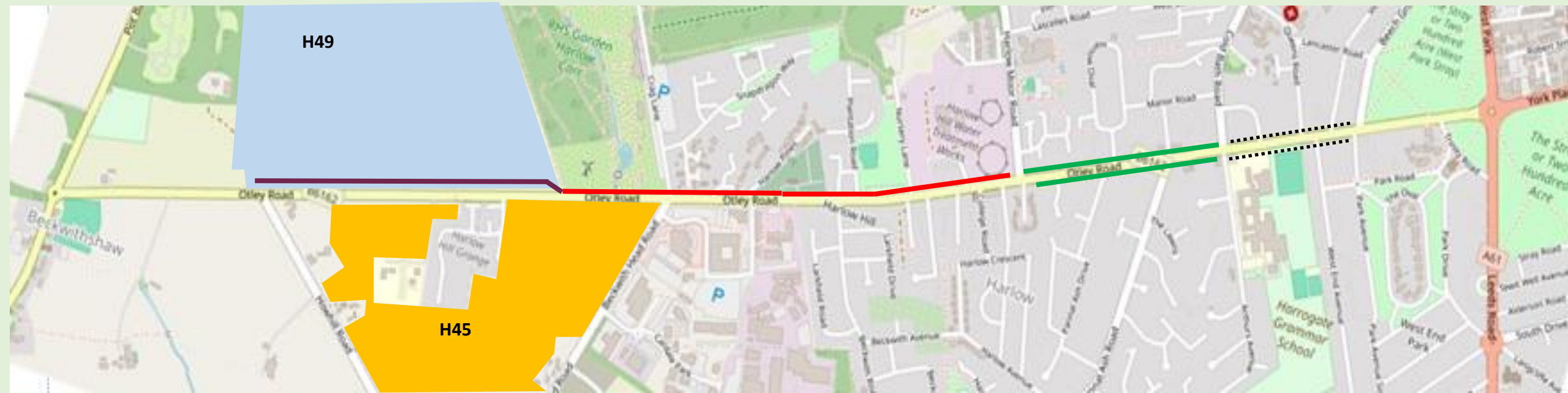


Parking on Yew Tree Lane

Suggested Actions

- **Stewards/Marshals** to be deployed to deter parking
- **Signage** to promote the use of on-site parking facilities
- **Notices** to be appended to vehicle windscreens
- **Reminders** to the parents of college students

Otley Road Cycleway



**H49 section
(development)**

**Phase 3
(to be
designed)**

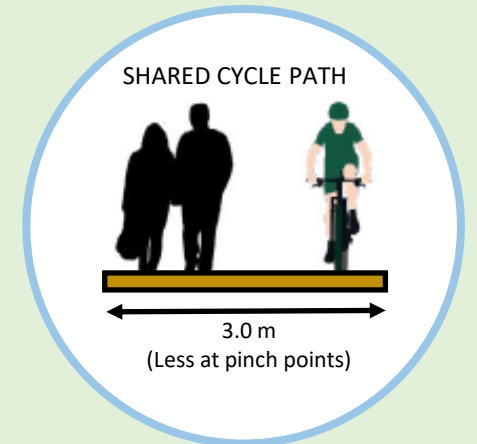
**Phase 1
(completed
)**

**Phase 2
(abandoned)**

PHASE 3

What we understand

- 'will be going ahead'.
- from Harlow Moor Road Junction to western edge of Harlow Carr.
- north side of Otley Road
- links up with a section within development H49.
- built as two way shared cyclist/pedestrian path
- funded from developer contributions.
- Expected loss of 5 trees, plus about 1500 sq m of grass verge.
- Toucan crossings at Beckwith Head Road/Crag Lane and Cardale Park junctions.



NYC informs us that there will be **no separate public consultation** for Phase 3, such as took place for Phases 1 & 2.

Instead it will form part of a west of Harrogate Traffic Assessment.

HAPARA has produced a leaflet which covers Phase 3 in more detail

Herlow & Pannal Hill Residents Association

Otley Road Cycle Path

Information for residents from HAPARA

March 2024

The purpose of this leaflet is to make local residents aware of the latest position, so far as we understand it, from North Yorkshire Council (NYC), with respect to Phase 3 of the Otley Road cycle path. At present we can only supply broad information because we have not yet seen a design for this section of the scheme.

Phase 2 of the Otley Road cycle path was cancelled in 2023 following the strong negative public response.

HAPARA's understanding of the latest position with Phase 3 of the Cycle Path

- We are assured that it is definitely going ahead
- It will extend (see map) from Herlow Moor Road junction to the western edge of RHS Harlow Carr, a distance of 1.08 km, constructed along the northern side only of Otley Road
- Construction is expected to result in the loss of 3 trees, mainly around the Bedwith Road junction area, plus a loss of about 1300 sq m of grassed highway verge
- It will be funded by contributions from the developers who will be responsible for the major West Of Harrogate sites. NYC will be responsible for designing, procuring and constructing the 1.08 km length
- It will then link up to a stretch going along the southern edge of Windmill farm (H48) where 800 - 1000 dwellings are being proposed. This will form part of the development and will be constructed behind the hedge that currently exists (shown as H48 Section on the map)
- Phase 3 will be built as a two-way shared cyclist/pedestrian facility with a notional width of 3.0 m (see sketch overleaf)
- The standard of the H48 section is not yet disclosed
- It is intended to have toucan crossings to the southern side of Otley Road at the Bedwith Head Road/Crag Lane and Carole Park junctions

NYC informs us that there will be no separate public consultation for phase 3 such as took place with phases 1 and 2. Instead it will form part of a Traffic Assessment (TA) that is being carried out for the west of Harrogate. The TA will form part of the application documents for each individual major site. So people will have to access a planning application, and then burrow into the TA addendum to find further information on the cycle path.

Timescales

No timescales are available at the moment, but North Yorkshire Council (NYC) has indicated that they wish to see phase 3 constructed prior to the occupation of dwellings on the relevant major sites, including H48 and H45. This could be years away but meanwhile design studies will continue.

HAPARA's views on the project

- Because no public consultation is being planned for phase 3, as was the case for phases 1 and 2, any formal response will require people to burrow into the planning application documentation which can often run into hundreds of pages. Also, NYC recently announced that the Otley Road cycle path scheme will be a 'priority route' but it has not been made clear why. The costly benefits aspects have never been explained. The major sites that will be expected to fund Phase 3 are:
 - H48 - Windmill Farm
 - H45 - Bluecoat Park
 - H51 - Various developments off Whinney Lane, which are not on Otley Road itself and, as a result, there may be objections from the developers
- There will be an approximate 1.5 m wide strip of grass verge lost along the entire length of Phase 3 - a noticeable loss of green landscape. All at a time when the talk is about climate change and the need to conserve such natural infrastructure to the greatest possible extent. Pedestrian facility will also be compromised.
- With phase 2 having been cancelled, phases 1 and 3 will operate in isolation.
- Whilst phase 3 will satisfy the official guidance LTHU/20, it needs to be noted that this states that a shared option should only be used for small sections where absolutely necessary. Were this to be pursued with a two-way segregated facility, this would involve the loss of even more green landscape
- There are significant pinch points in the vicinity of Harlow Carr and Harlow Pines.
- Whatever one's view of phase 3 itself, we believe that not having a formal consultation is wrong even though NYC might argue that all the appropriate 'legal requirements' have been satisfied.
- The general view of this scheme is that it will not deliver any real benefits to mitigate against the high levels of traffic on Otley Road which is how it was sold when initially launched. If the intention is to get more people cycling, which is a perfectly sensible aim, this scheme seems to be an expensive way of delivering the objective. Perhaps a better option would be to publicise the existing network of cycle paths to a greater extent.

What residents can do

As was indicated at the top of this newsletter, our intention is to make local people aware of the latest position concerning phase 3 of the cycle path project and to ask for general views.

It is appreciated that there is no design detail to look at but it is unlikely to be radically different from phase 1, so using this as a template seems a fair initial assumption.

A further point to note is that a package of sustainability measures was signed off by North Yorkshire Council before Christmas 2023. One of these measures makes mention of 'increasing the profile' of cycle paths that already exist.

HAPARA has been working with NYC on this sustainability package and we intend to follow up on the proposals relating to cycle paths. Representatives of the Council have also been invited to the HAPARA Spring Meeting on Wednesday 17 April to provide an update on the progress being made on the sustainability package.

Our intention is to put together a summary of responses and make the Council aware of the views of the local residents.

Rena Dziubek, Chairman, HAPARA

Please send responses to: info@hapara.org

Contact us on info@hapara.org

Community Matters



Bus Service

The Green Hut



**Treasurer's Report
and
Membership update**

HAPARA Balance Sheet

1 Oct 2023 to 31 March 2024

Balance as at 30th Sept 2023 - £3,419.24

INCOME		EXPENDITURE	
Subscriptions	£8.00	Virtual Meeting	£15.59
		Subscriptions	
		Web Hosting/ Maintenance	£259.19
		Printing	£100.00
TOTAL INCOME		TOTAL EXPENDITURE	
£8.00		£374.78	

Excess of Expenditure over income - £366.78

Balance as at 31th Mar 2024 - £3,052.46

Future of HAPARA



Over to you!