

# Otley Road Sustainable Transport Package October Update

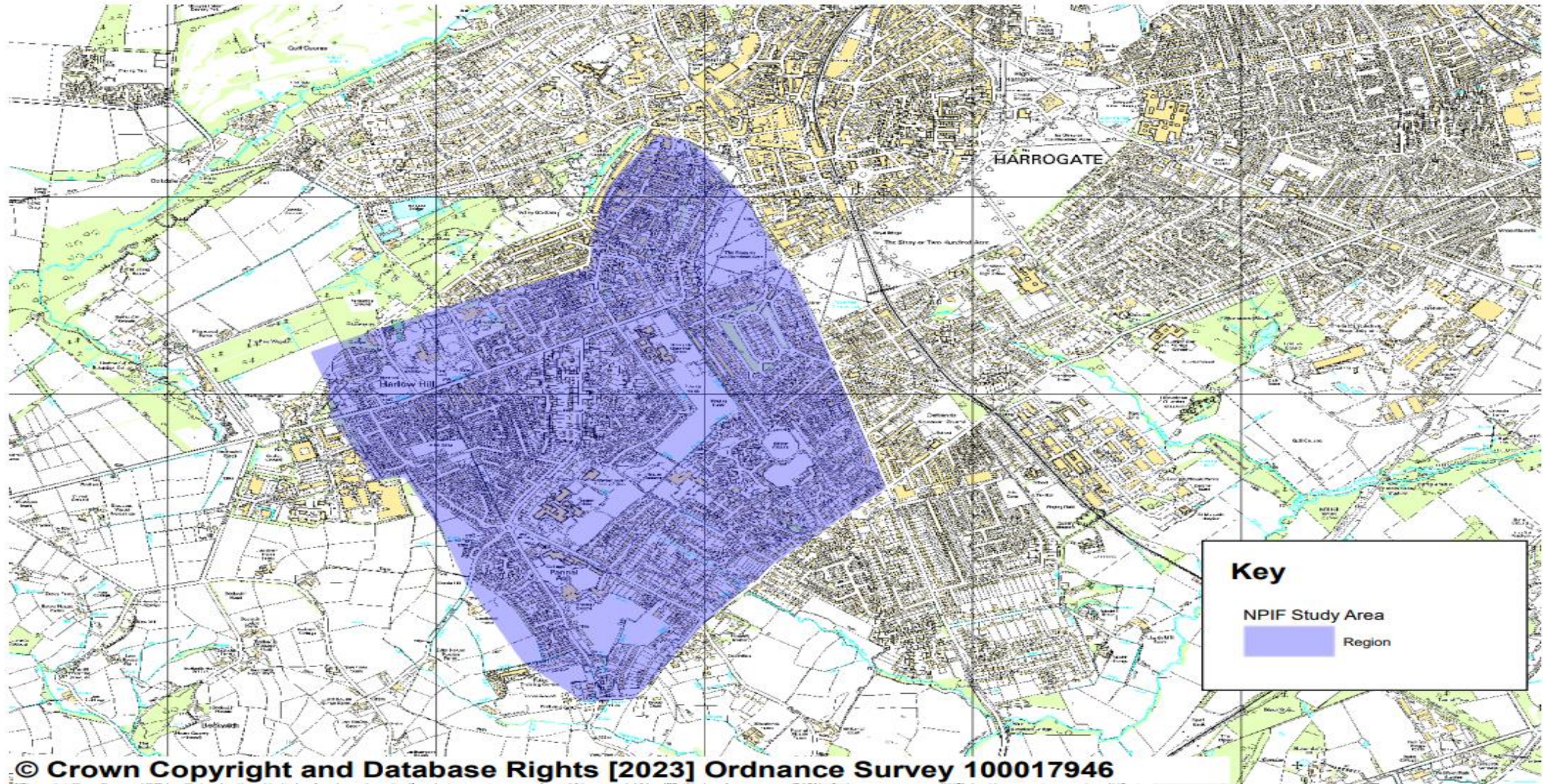
Melisa Burnham, Area Manager

Heather Yendall, Improvement Manager

# What is the Otley Road Sustainable Transport Package?

- £797k funding from the National Productivity Investment fund (NPIF) to spend in the vicinity of the Otley road corridor to reduce congestion and enhance Active Travel opportunities.
- Objectives of the NPIF Fund recognised the need to provide a series of safety improvements and congestion relief along the Otley Road corridor and the delivery of sustainable transport enhancements.

# Study Area –around the Otley road corridor.





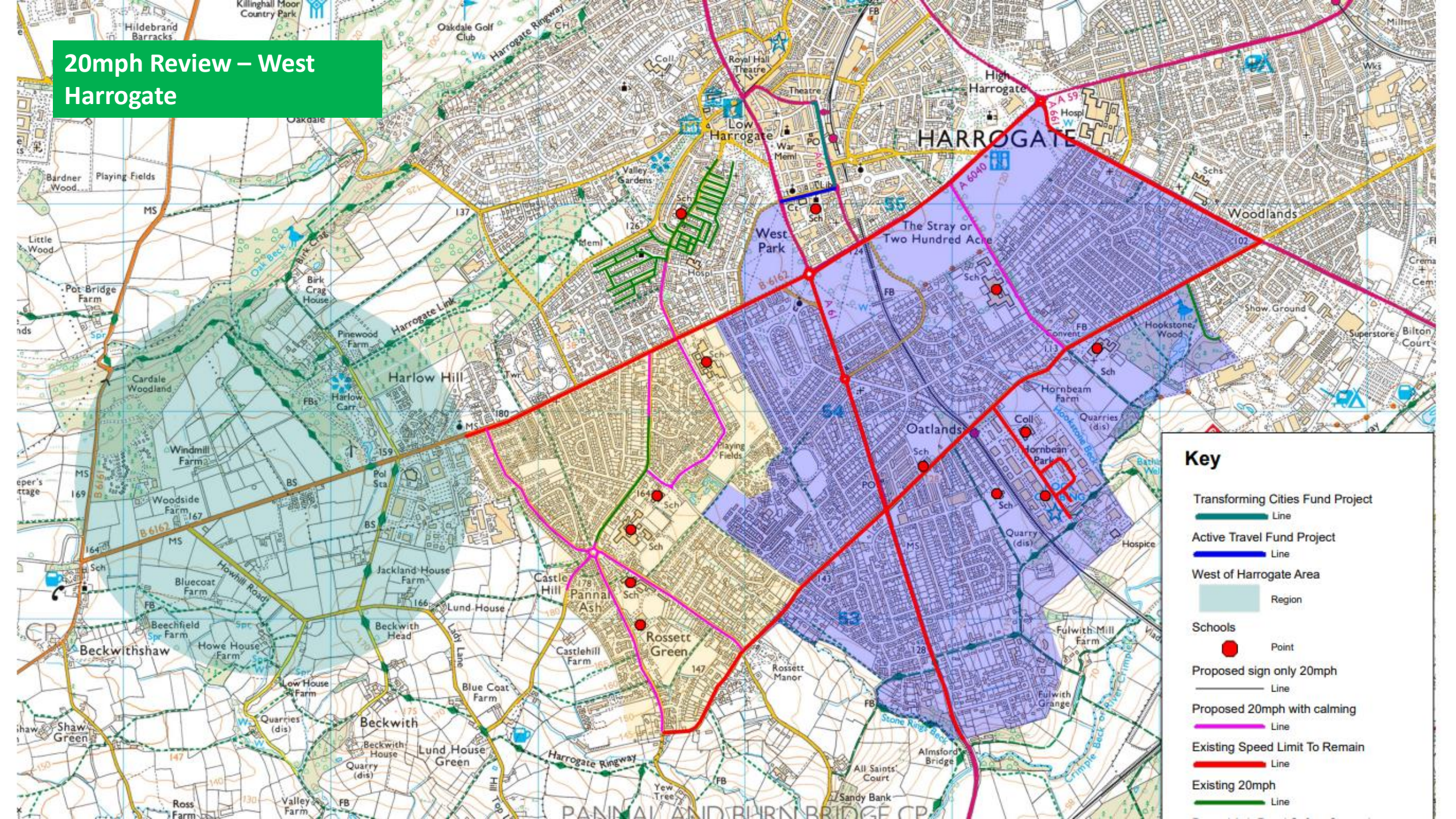
# Officer Working Group

- An officer working group was created to review the study area and create a package of works.
- Representation in this group covered Traffic Signals, Passenger Transport, Highway Operations and Development Management.
- Meetings to examine data and onsite walk overs were carried out.

# Considerations

- Existing speed and collision data
- Historic customer feedback
- Recent resident engagement and stakeholder discussions (HAPARA, Local Road Safety Meetings and Local Councillors)
- Consideration of additional Active Travel and Road Safety Projects.
  - Active Travel Fund – Victoria Avenue
  - Transforming Cities Fund
  - Harrogate Transport Improvement Package
  - West of Harrogate
  - 20mph Review West of Harrogate

# 20mph Review – West Harrogate



## Key

- Transforming Cities Fund Project  
Line
- Active Travel Fund Project  
Line
- West of Harrogate Area  
Region
- Schools  
Point
- Proposed sign only 20mph  
Line
- Proposed 20mph with calming  
Line
- Existing Speed Limit To Remain  
Line
- Existing 20mph  
Line

## Recommendations

Item Number	Proposals and/or Requests	Anticipated Improvement	Cost Estimate	Suggested for Delivery?	Reason
1	Signal upgrade at Cold Bath Road / Otley Road/Arthurs Avenue Junction	Upgrading signal equipment to link with signals at Pannal Ash Road Junction. Also look into amending some of the kerb lines to make the footpaths wider	£ 200,000	Yes	To provide congestion relief on Otley Road Corridor. The upgrade was planned as part of the previous cycle scheme and is necessary to improve the link between these signals and Pannal Ash Road / Otley Road junction signals. This will improve traffic movement and congestion between the two signalised junctions to increase capacity
2	Improvements and alterations to the bus stops along Otley Road Corridor	The changes will include relocation/removal of bus stops to reflect current services. Improvements to kerbs, signs etc. for accessibility.	£ 50,000	Yes	To improve facilities and accessibility around bus stops along Otley Road to reflect latest changes to bus services in the area.
3	Extension of the 20mph on Cold Bath Road to the junction with Otley Road including surrounding residential roads	Traffic calming required alongside formalising parking arrangements and installation of double yellow	£ 100,000	Yes	To reduce speed and enhance the local environment to bring the area forward as a pleasant place to walk, wheel and cycle.
4	Improve the access arrangements at the pedestrian crossing outside Falcon Chiropractic on Cold Bath Road and install a raised table to calm traffic	Relocate signals cabinet to opposite side of the road where the pavement is wider. Relocate the cycle storage and refuse bin.	£ 5,000	Yes	To improve accessibility around the pedestrian crossing that is currently blocked by other infrastructure placed on the highway
5	Install an uncontrolled crossing point on Cold Bath Road adjacent Western Primary School	Install a build out and uncontrolled crossing point. May require amendments to the parking bays and extension of double yellow lines	£ 10,000	Yes	To provide a safer place to cross near the school in addition to providing some minor traffic calming and preventing illegal parking at the junction
6	Improve the crossing between the public right of way (PROW) on Green Lane and Ashville College	Provide a build out to improve visibility emerging from the Public Right Of Way and also slow traffic at the uncontrolled crossing point.	£ 10,000	Yes	To improve visibility for pedestrians and cyclists emerging from the bridleway
7	Review signing for cycle routes across the area	Review and improve signing of the cycle routes across Harrogate in line with the LCWIP	£ 25,000	Yes	To improve awareness of cycle routes across the network in Harrogate
8	20mph limit or zone outside Harrogate Grammar school on Arthurs Avenue (incorporating Cundall Way, Southway, Grasmere Crescent, Rossett Way, Arthurs Close, Arthurs Grove, Richmond Avenue, Richmond Road, Richmond Close, Richmond Holt)	Reduction in speed limit to 20mph with associated traffic calming	£ 75,000	Yes	To reduce speed outside the school and to enhance the local environment by making the streets feel safer
9	New cycle parking and improved public realm on Cold Bath Road.	Parklet or similar for cycle parking and places to sit/rest	£ 10,000	Yes	To enhance the local area and provide facilities to promote active travel.
10	Potential improvement to Nursery Lane to allow cyclists to use as an off-road leisure route	Investigate the potential of a cycle track order and associated infrastructure works to the surface. Third Party Land would be required.	£ 100,000	Yes	To provide additional off-road infrastructure for cyclists

£ 585,000

## Items considered but to be delivered in future projects

Item Number	Proposals and/or Requests	Anticipated Improvement	Suggested for Delivery?	Reason
11	New crossing facility on Otley Road near Park Avenue/Beech Grove	Provide a crossing facility on Otley Road to link to the stray and Beech Grove	No	Will be considered alongside proposals being developed as part of West of Harrogate.
12	Pannal Ash Road resurfacing and traffic calming	Resurface the carriageway and provide traffic calming	No	Will be advertised for installation prior to resurfacing scheme if successful will be incorporated into the surfacing scheme being delivered in the 24/25 Financial Year.
13	Beech Grove layout changes at junction with Lancaster Road	Build outs to calm traffic and reduce car parking bays	No	We will be investing in the design of options to be considered as part of any changes brought about by West of Harrogate developments. Some funds may have to be set aside to allow for this work to take place.
14	20mph zones around Green Lane and Yew Tree Lane	Implementation of 20mph and associated traffic calming	No	Has been considered in separate report being considered at September ACC in response to the 20mph proposals from the Road Safety Campaign and petition. Funding for this would need to be secured separately to the NPIF package of works



# Future Active Travel Strategy



THEMES IDENTIFIED FROM  
THIS PROJECT CAPTURED



LOCAL TRANSPORT PLAN  
DEVELOPMENT ONGOING



LOCAL CYCLING AND  
WALKING INFRASTRUCTURE  
PLAN



# Next steps for the Otley Road Sustainable Transport Strategy.

- Review and consideration of feedback
- **November 23-** Report to Corporate Director of Environment, in consultation with the Executive Member of Highways and Transportation for approval to proceed with design work.
- **Jan 24- April 24** Design and development of delivery programme and final costs.
- Implementation from **May 24** onwards