



Annual General Meeting
Wednesday 11 October 2023

Welcome



René Dziabas
Chairman

AGENDA

1. Welcome and Introductions
2. Election of Officers
3. Treasurer's Report
4. Communications
5. Update on Current Development Sites
6. West Harrogate Infrastructure Update
7. Otley Road Cycleway Scheme
8. Pannal and Oatlands Road Safety Campaign
9. NYC Sustainability Package
10. Future Of HAPARA
11. Audience Questions



Election of Officers

Chairman

Treasurer

Secretary

Membership Secretary

Web Master

Social Media

Committee

HAPARA BALANCE SHEET

1st OCT 2022 – 30th SEPT 2023

Balance as at 30th Sept 2022 - £3,457.19

INCOME Subscriptions £352.00	EXPENDITURE Virtual Meeting £130.76 Subscriptions Web Hosting/ Maintenance £259.19
TOTAL INCOME £352.00	TOTAL EXPENDITURE £389.95

Excess of Expenditure over income - £37.95

Balance as at 30th Sept 2023 - £3,419.24

SUBSCRIPTIONS

The committee recommends that the constitution requirement for annual subscriptions be suspended for 2023 - 2024

Communications

Local Media

- Multiple articles generated with local media.
- Often contacted for comments and views.
- Numerous quotes given raising concerns on planning and wider issues.

Newsletters

- Sent to 280 recipients
- Opened around 70-75% of the time

Facebook

- Using the original <https://www.facebook.com/saveharlowsvie> group
- 871 follow the group (up from 860 Sept 22)

Twitter/X

- Via [HAPARA \(@HaparaHgt\) / Twitter](#)
- 446 followers (down from 459 Sept 22)

Instagram/TicTok

- - We still don't do them!

Residents demand progress on west Harrogate infrastructure plan

by Vicky Carr

Last updated Jun 9, 2023



Thousands of new homes are being built near Otley Road in Harrogate

Residents to meet council about future of Otley Road sustainable travel

by Thomas Barrett Local Democracy Reporter

Last updated Apr 28, 2023



Otley Road cycle route in Harrogate.

Update on current development sites

Police Training Site, Yew Tree Lane

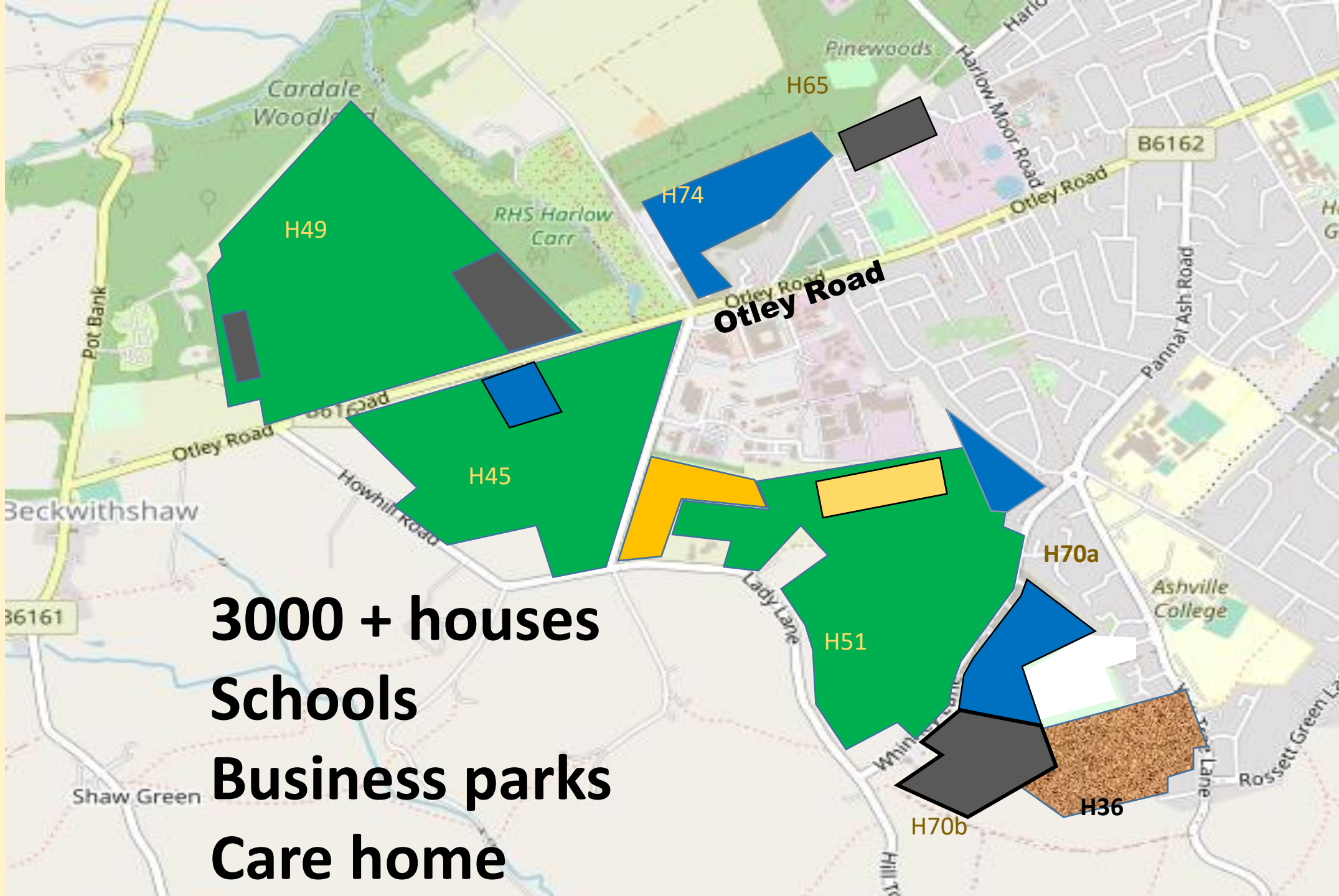
- Reserved matters application – details of 200 dwellings, infrastructure, Biodiversity, etc.
- HAPARA comments submitted March 2023.
- Lack of low carbon initiatives. Inadequate infrastructure. No construction plan.
- Public comments still being taken
- Planning committee = date to be decided

Whinney Lane

- Stonebridge: completion September 2023 ???
- Final surfacing
- Street lighting
- Hedge replacement
- Landscaping
- Dog bins
- Reinstatement of public footpaths



West Harrogate Infrastructure Update



3000 + houses
Schools
Business parks
Care home

Scale

Location

Green fields

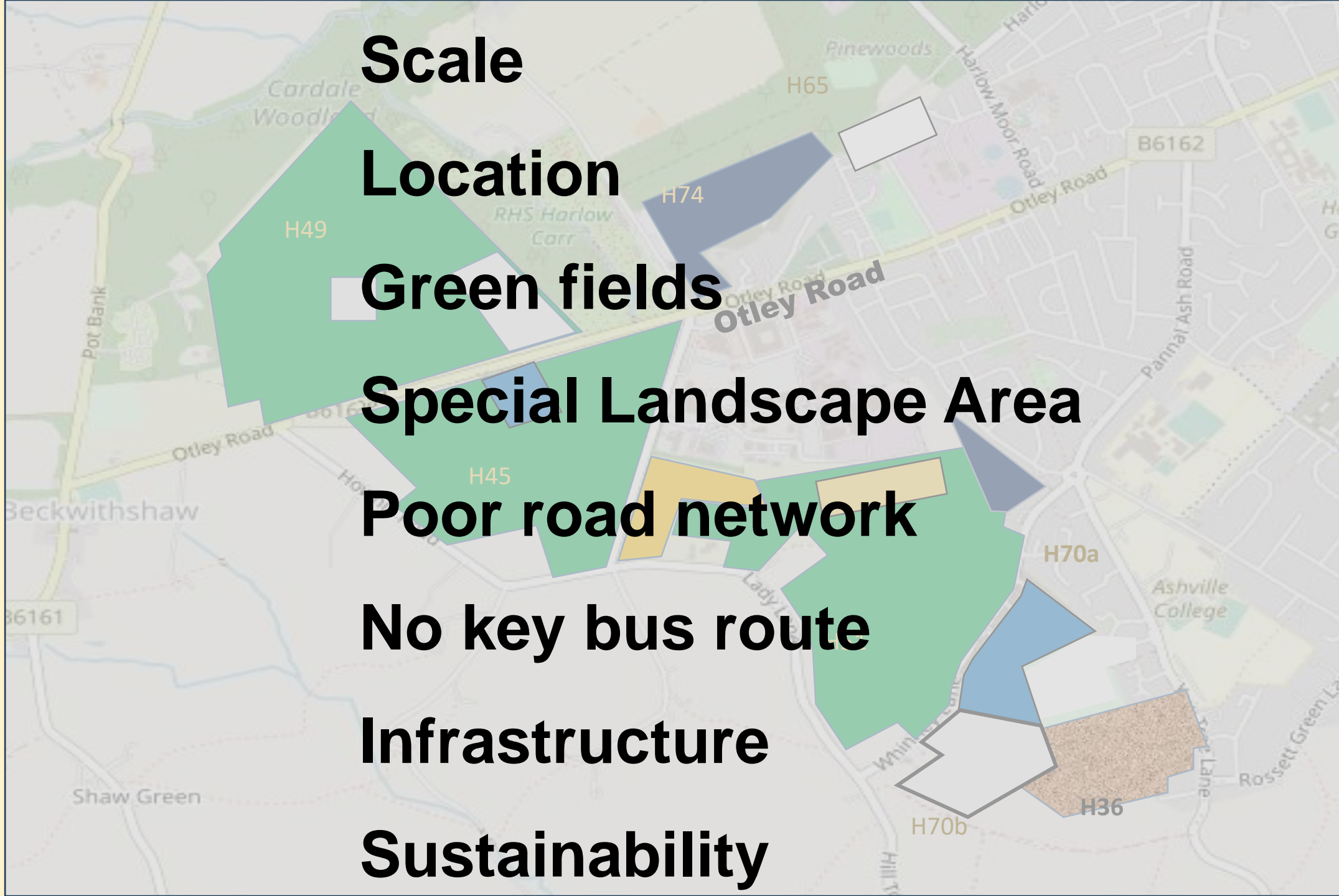
Special Landscape Area

Poor road network

No key bus route

Infrastructure

Sustainability



A map of Harlow, Essex, showing various colored overlays and text labels. The map includes roads like Otley Road, Harlow Moor Road, and Pannal Ash Road. Landmarks such as Ashville College and RHS Harlow Carr are visible. Colored areas include a large green area (H49), a blue area (H74), a yellow area (H45), a light blue area (H70a), and a brown stippled area (H36).

~~Scale~~

~~Location~~

~~Green fields~~

~~Special Landscape Area~~

~~Poor road network~~

~~No key bus route~~

Infrastructure

Sustainability

Infrastructure

Strategy



Mitigation measures

Infrastructure

Mitigation measures



Strategy

Strategy questions

What is the total trip generation? Where is it going?

What traffic modelling has been done?

On what basis are people assumed to switch to bus / cycle?

Are any routes or areas to 'traffic calmed'?

Any made into through routes?

Has a new access road to A61 south been considered?

Is park and ride part of the strategy?



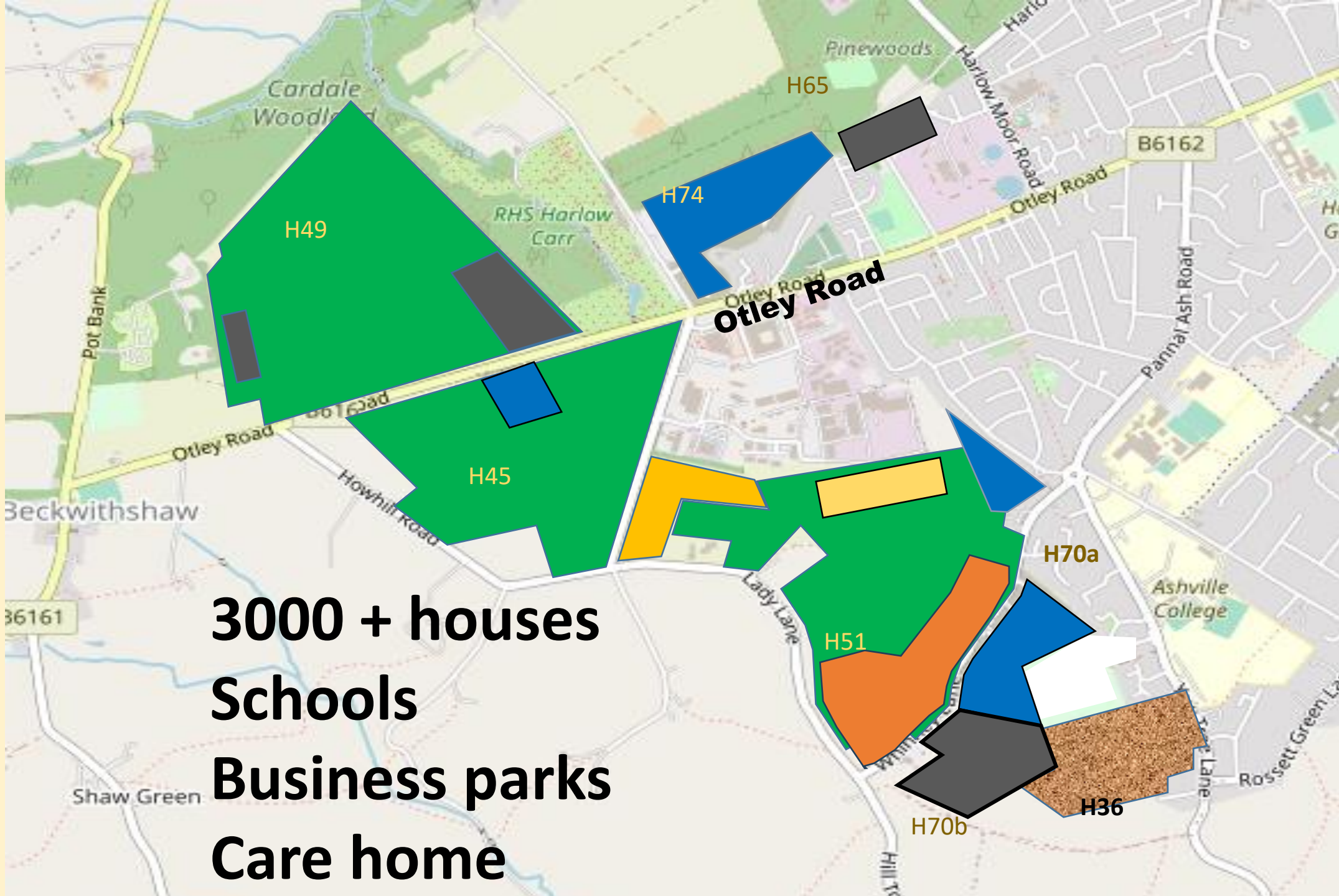
H51 (part)

230 homes

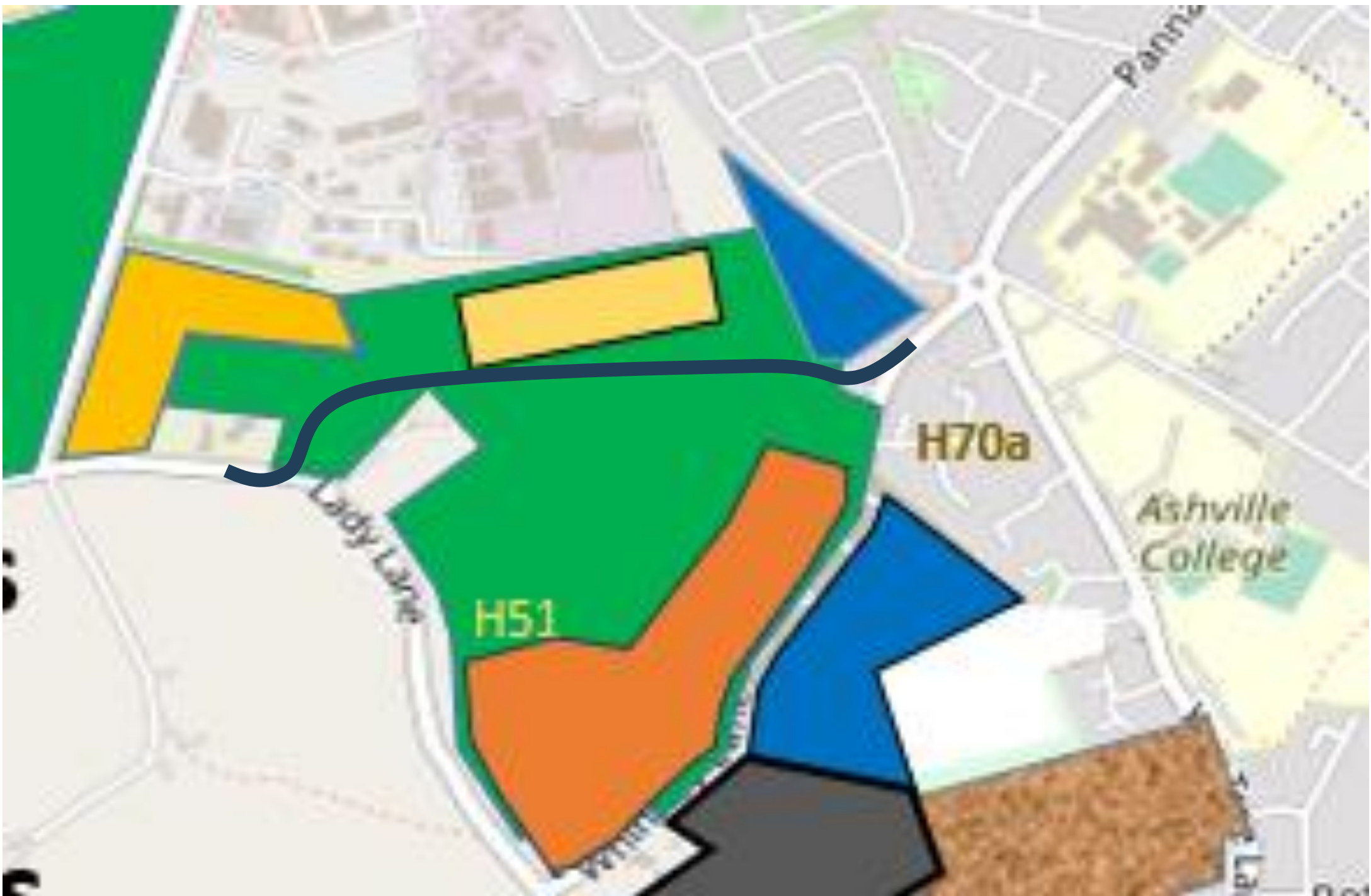
Primary school

Source:
Banks Group
2023





3000 + houses
Schools
Business parks
Care home



“The proposed development therefore meets the sustainable transport objectives of the National Planning Policy Framework and its residual traffic impacts are not considered severe. On that basis, there is no justifiable transportation reason why planning consent should be withheld.”

Source:

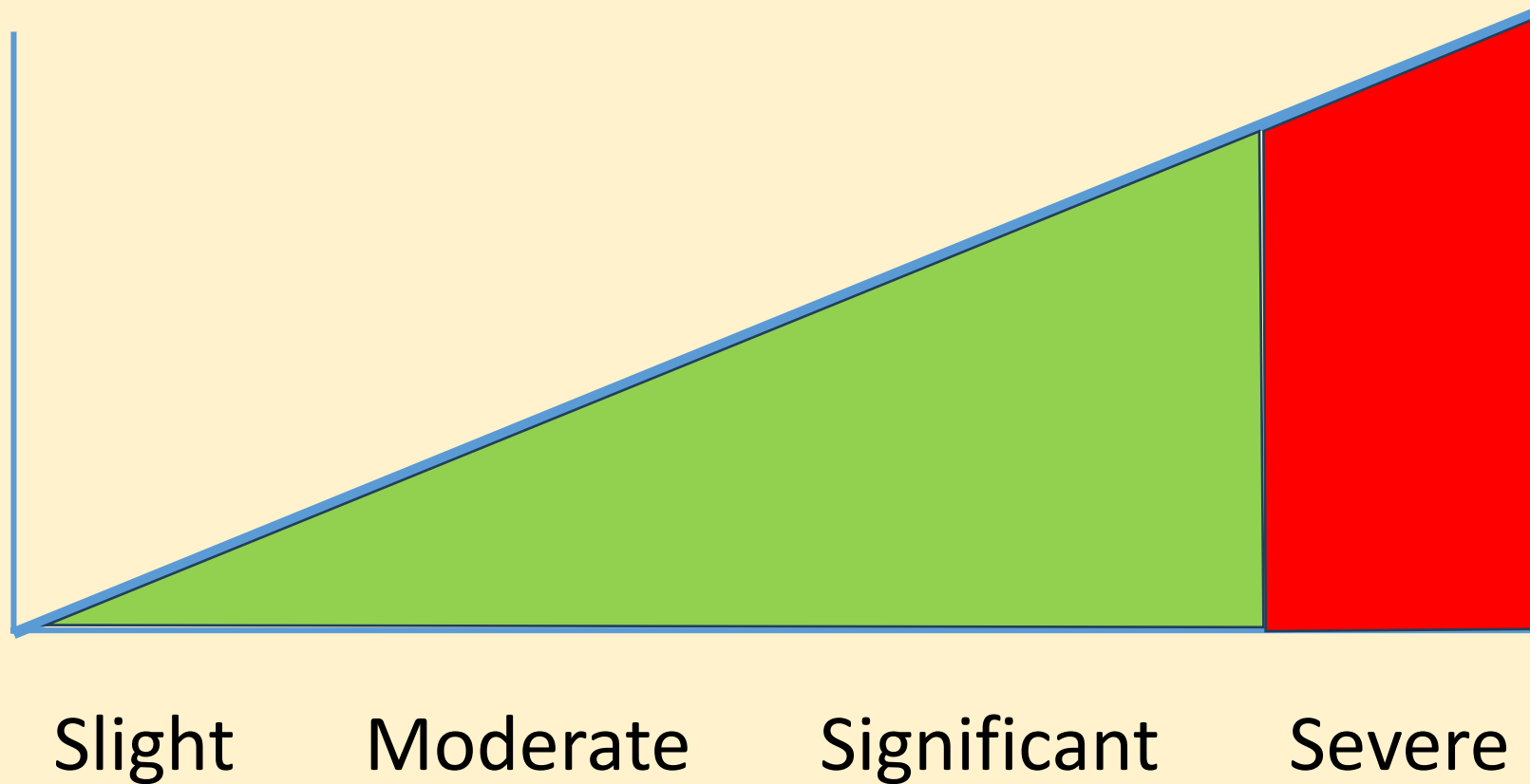
Transport Assessment, Banks Group,
December 2022

The proposed development therefore meets the sustainable transport objectives of the National Planning Policy Framework and its residual traffic impacts are **not considered severe**. On that basis, there is no justifiable transportation reason why planning consent should be withheld.

Source:

Transport Assessment, Banks Group,
December 2022

Traffic impact





Severe

**When I use a word,
Humpty Dumpty
said in rather a
scornful tone, 'it
means just what I
choose it to mean**

Lewis Carroll: Through the Looking Glass



**When I use a word,
Humpty Dumpty
said in rather a
scornful tone, 'it
means just what I
choose it to mean**

Lewis Carroll: Through the Looking Glass

Severe

Severe

Sustainable

Fair and reasonable

Next Steps

Further planning applications

Transport Strategy document

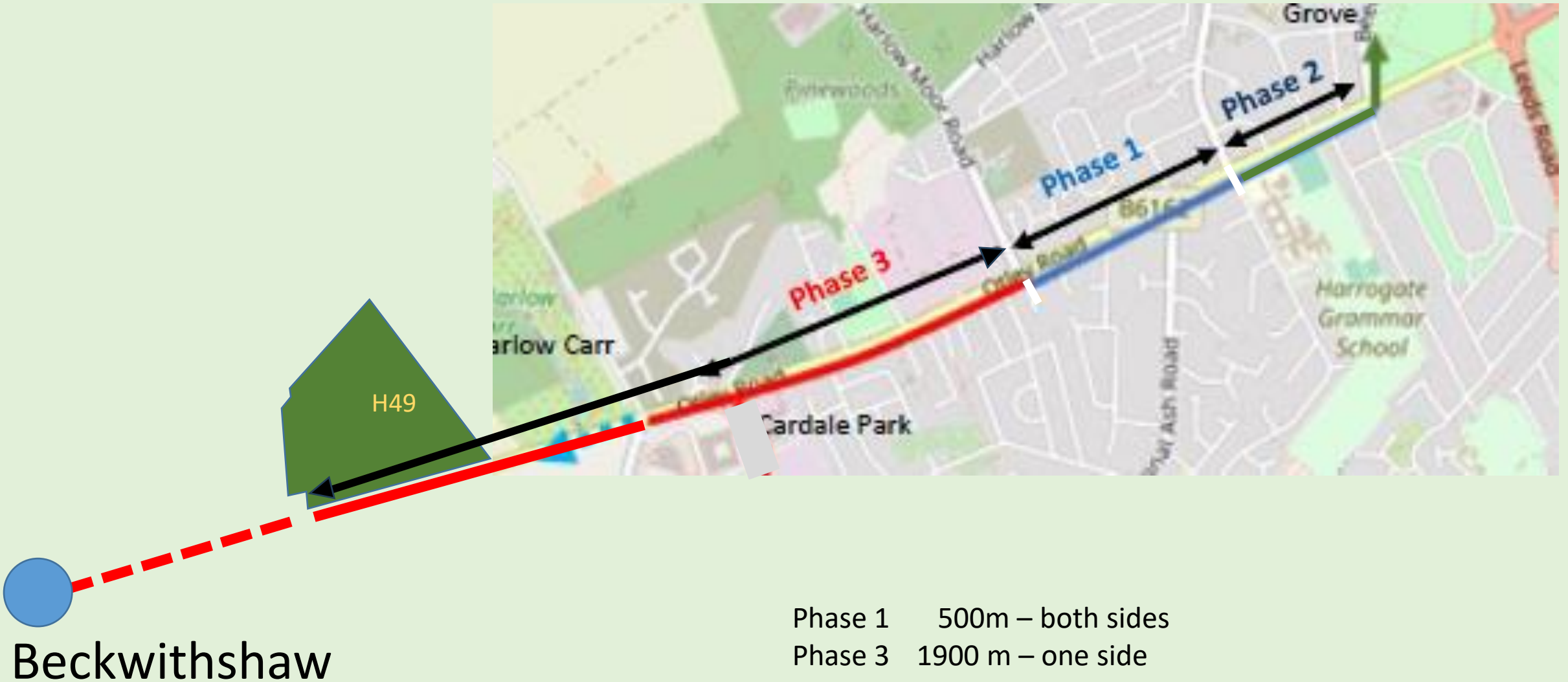
Period for comments

~~Harrogate and Knaresborough planning committee~~

NY Strategic Planning Committee

Reserved matters

Otley Road Cycleway



Otley Road Cycleway

Phase 1

- Largely completed
- Some remedial work underway
- Some concerns remain



Otley Road Cycleway

Phase 2

- Scheme cancelled Feb 2023
- Monies reallocated to Sustainability Package



Otley Road Cycleway

Phase 3

- Harlow Moor Road to
Windmill Farm
Beckwithshaw ??
- Design in Progress
- Standards ??
- Public consultation ??





**PANNAL ASH AND OATLANDS ROAD
SAFETY CAMPAIGN
UPDATE**

GOOD NEWS!

Landmark Harrogate road safety and transport package unveiled

by John Plummer

Sep 6, 2023

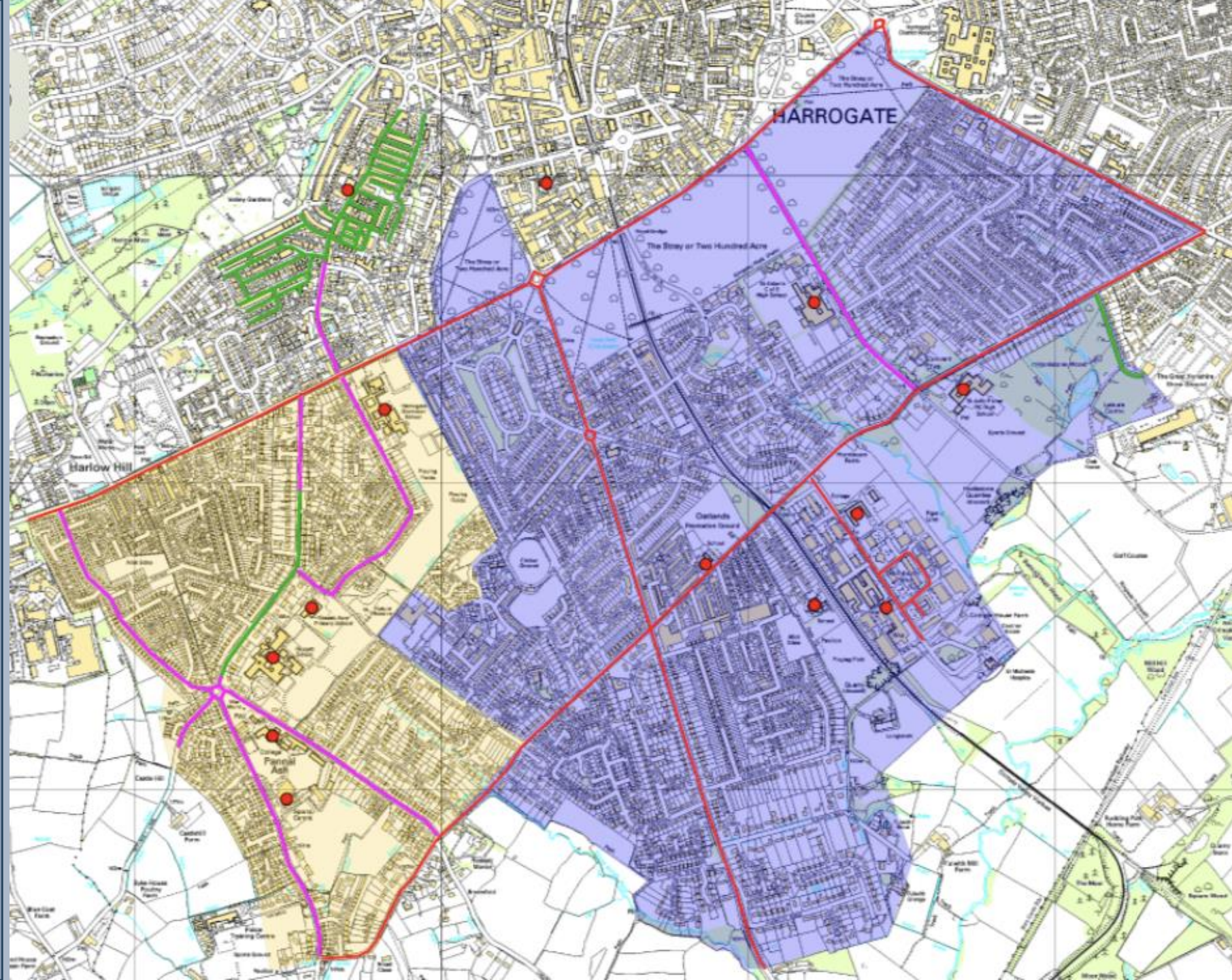


Cllr Keane Duncan outside Rossett School

North Yorkshire's first 'School Street' launched 6th September

Oatlands Junior School Beechwood Grove

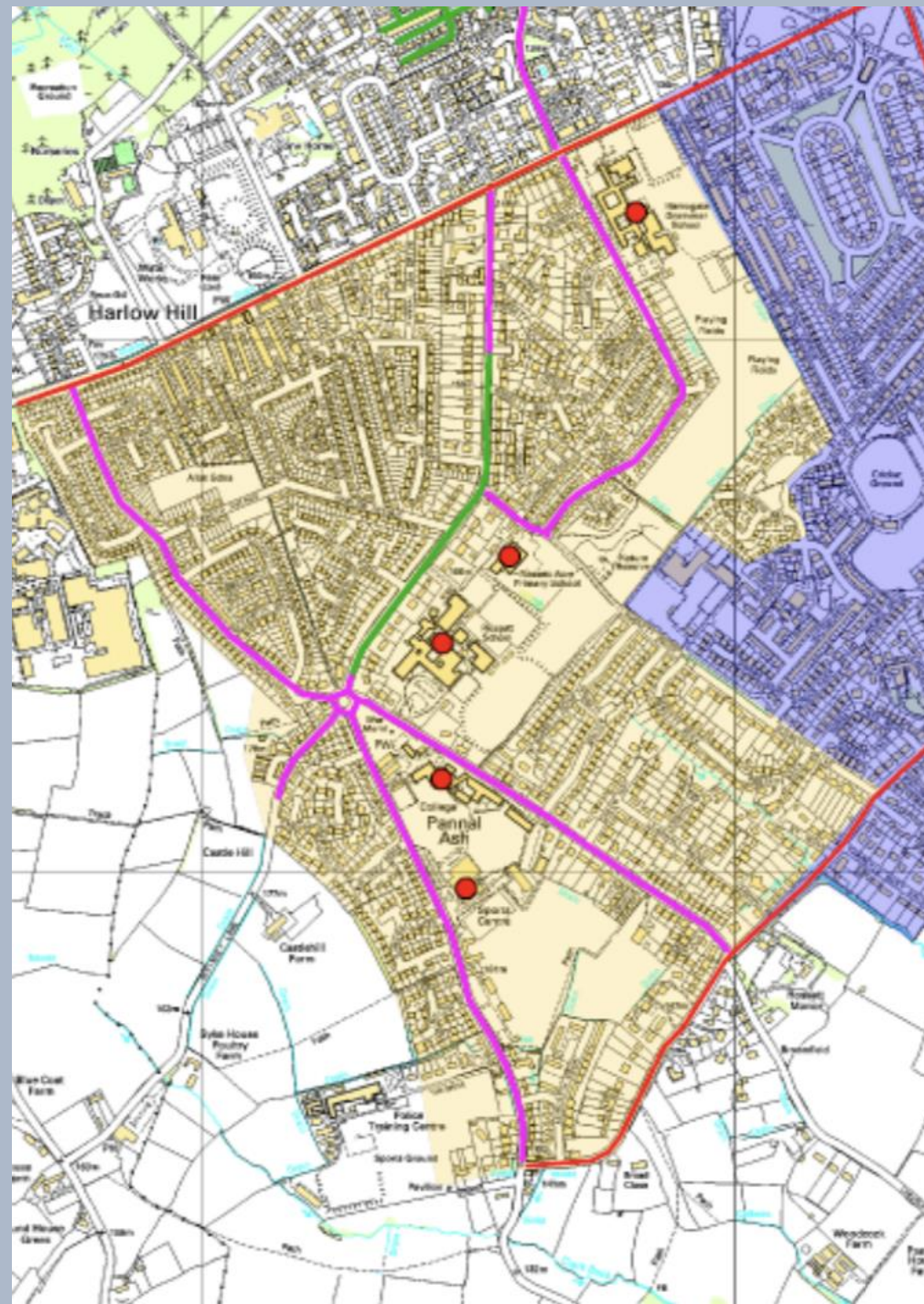
20 MPH ZONE
FOR PANNAL
ASH AND
OATLANDS



Keep our children
and other
residents safer

Stop our area
becoming a cut-
through and
enhance its
special character

Make our
community
happier and
healthier





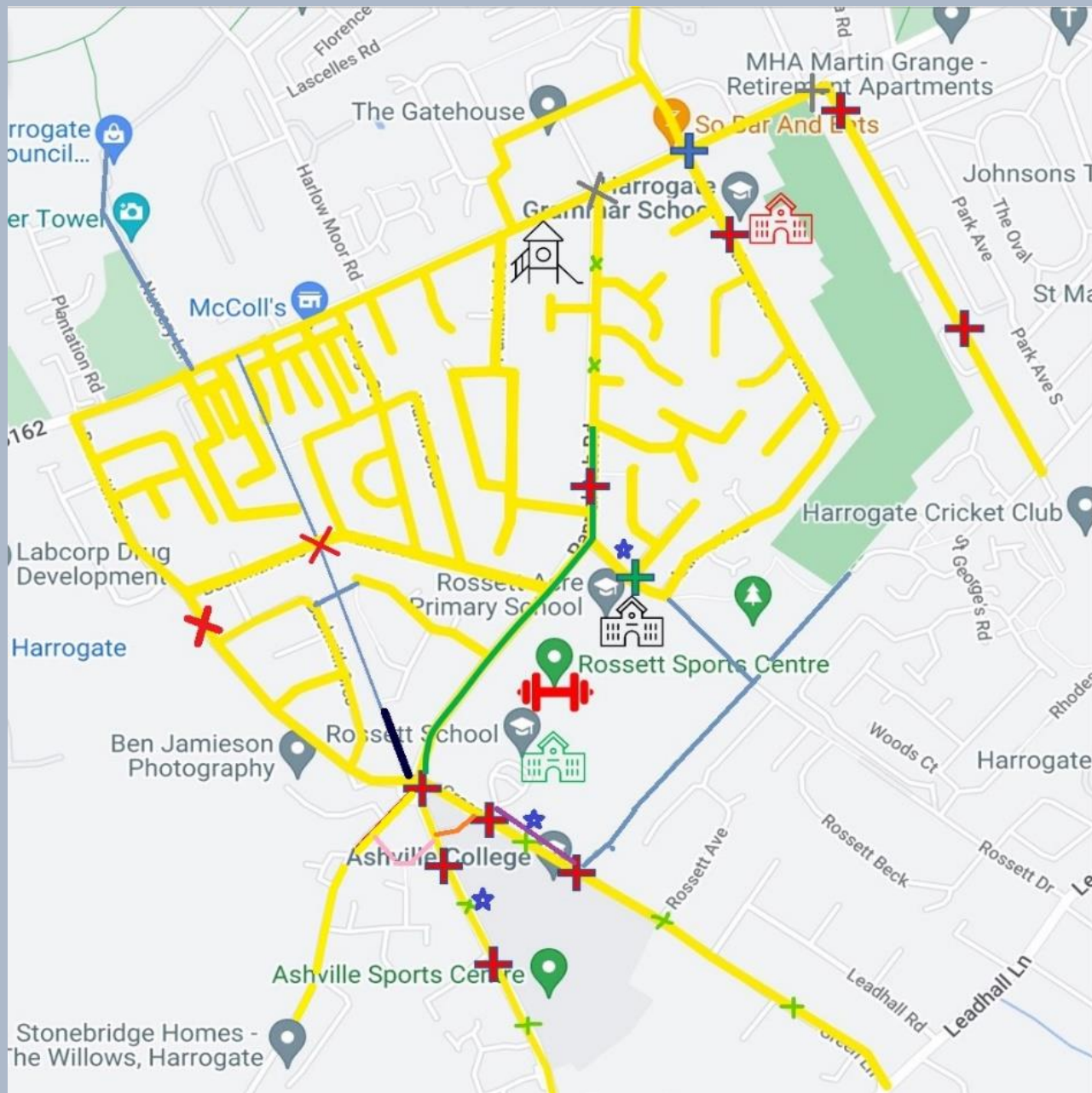
What more
would we like?

Controlled crossings outside the schools

Some additional parking restrictions and pavement widening

Some sections of larger roads included

Education and enforcement



Key

⊕ Crossing that needs to be adjusted.

20 mph speed limited needed

⊕ Additional permanent crossings

⊗ Traffic calming infrastructure needed – speed bumps/chicane

— Existing 20mph limit – signed only – infrastructure needed

★ Double yellows/parking restrictions

⊕ Diagonal crossing

⊕ Zebra Crossing with lollipop person

🏫 School

— Footpath widening

🏠 Nursery

— Ashville willing to make this pedestrianised

🏋️ Sports centre

— PROW could be linked to make Active Travel Corridor.

— PROW needs work to reduce flooding in winter.

— Link through from Whinney Lane



NEXT STEPS

Continue to work with NYC, schools, local residents and other stakeholders to ensure best possible outcomes in design and delivery phase

Public Consultation



SafePAZforall@gmail.com

Safer, healthier streets for
everyone in our community

Thank you!

Otley Road Sustainable Transport Package October Update

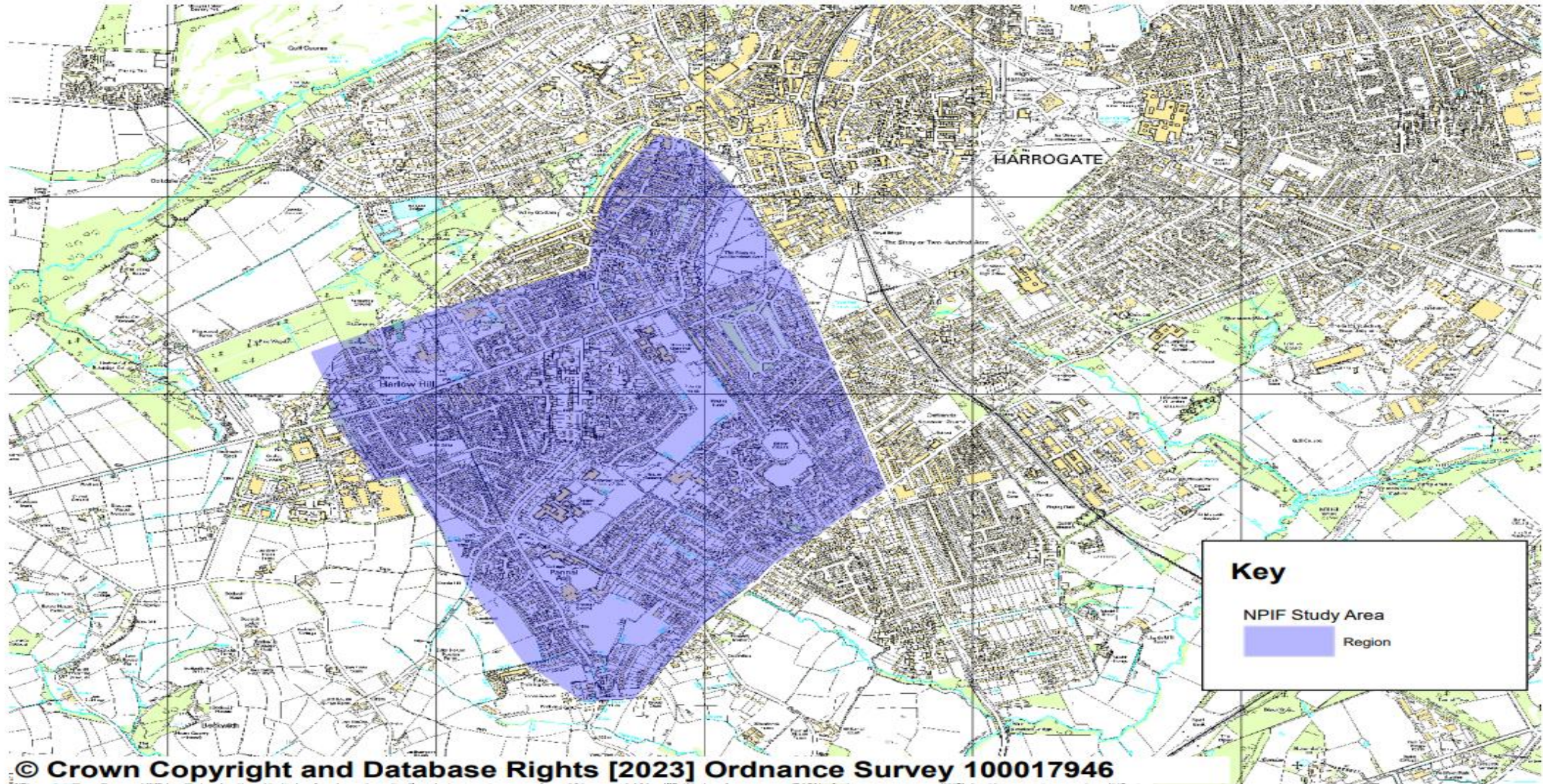
Melisa Burnham, Area Manager

Heather Yendall, Improvement Manager

What is the Otley Road Sustainable Transport Package?

- £797k funding from the National Productivity Investment fund (NPIF) to spend in the vicinity of the Otley road corridor to reduce congestion and enhance Active Travel opportunities.
- Objectives of the NPIF Fund recognised the need to provide a series of safety improvements and congestion relief along the Otley Road corridor and the delivery of sustainable transport enhancements.

Study Area –around the Otley road corridor.





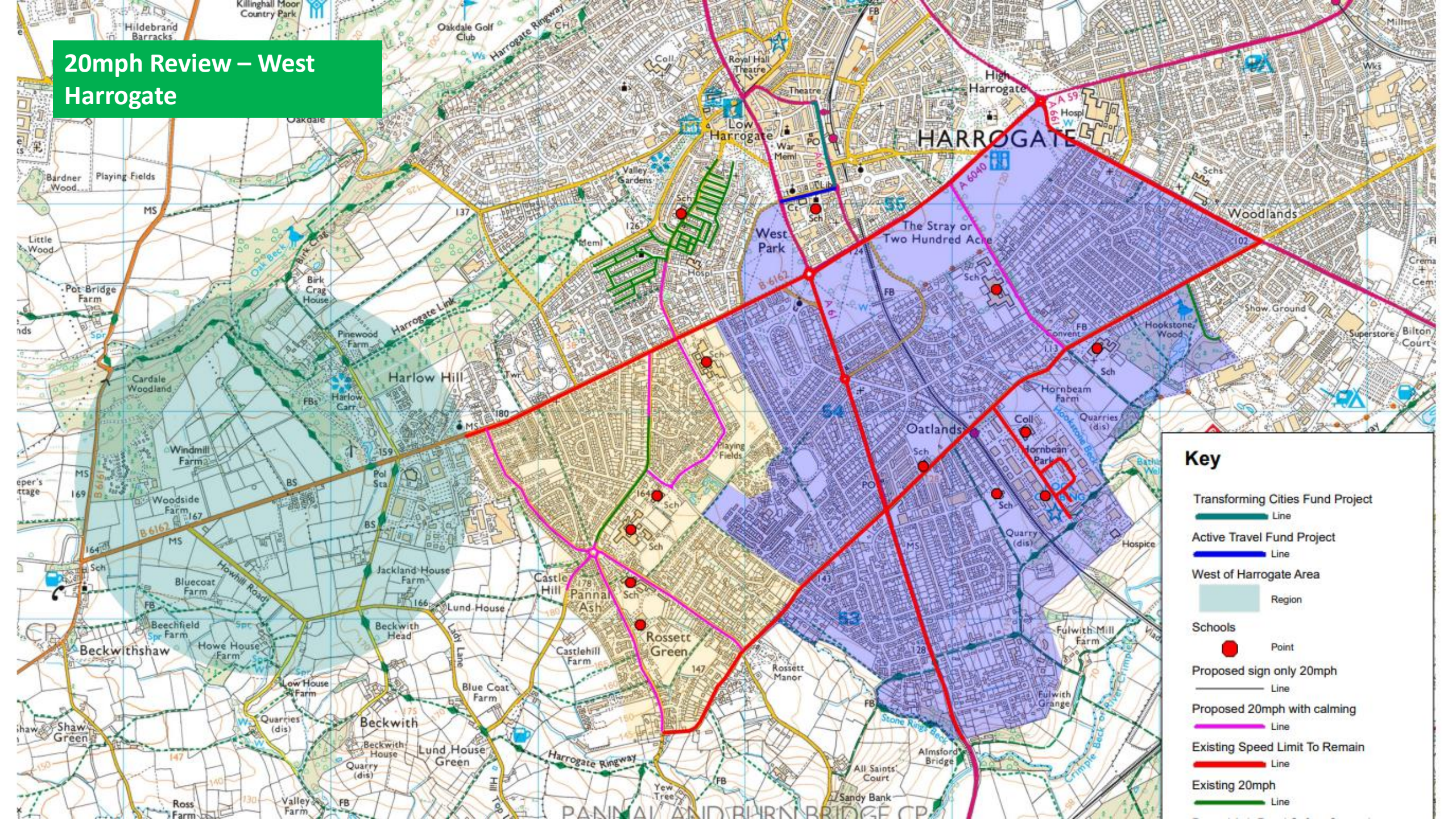
Officer Working Group

- An officer working group was created to review the study area and create a package of works.
- Representation in this group covered Traffic Signals, Passenger Transport, Highway Operations and Development Management.
- Meetings to examine data and onsite walk overs were carried out.

Considerations

- Existing speed and collision data
- Historic customer feedback
- Recent resident engagement and stakeholder discussions (HAPARA, Local Road Safety Meetings and Local Councillors)
- Consideration of additional Active Travel and Road Safety Projects.
 - -Active Travel Fund – Victoria Avenue
 - -Transforming Cities Fund
 - - Harrogate Transport Improvement Package
 - - West of Harrogate
 - - 20mph Review West of Harrogate

20mph Review – West Harrogate



Key

- Transforming Cities Fund Project
Line
- Active Travel Fund Project
Line
- West of Harrogate Area
Region
- Schools
Point
- Proposed sign only 20mph
Line
- Proposed 20mph with calming
Line
- Existing Speed Limit To Remain
Line
- Existing 20mph
Line

Item Number	Proposals and/or Requests	Anticipated Improvement	Cost Estimate	Suggested for Delivery?	Reason
1	Signal upgrade at Cold Bath Road / Otley Road/Arthurs Avenue Junction	Upgrading signal equipment to link with signals at Pannal Ash Road Junction. Also look into amending some of the kerb lines to make the footpaths wider	£ 200,000	Yes	To provide congestion relief on Otley Road Corridor. The upgrade was planned as part of the previous cycle scheme and is necessary to improve the link between these signals and Pannal Ash Road / Otley Road junction signals. This will improve traffic movement and congestion between the two signalised junctions to increase capacity
2	Improvements and alterations to the bus stops along Otley Road Corridor	The changes will include relocation/removal of bus stops to reflect current services. Improvements to kerbs, signs etc. for accessibility.	£ 50,000	Yes	To improve facilities and accessibility around bus stops along Otley Road to reflect latest changes to bus services in the area.
3	Extension of the 20mph on Cold Bath Road to the junction with Otley Road including surrounding residential roads	Traffic calming required alongside formalising parking arrangements and installation of double yellow	£ 100,000	Yes	To reduce speed and enhance the local environment to bring the area forward as a pleasant place to walk, wheel and cycle.
4	Improve the access arrangements at the pedestrian crossing outside Falcon Chiropractic on Cold Bath Road and install a raised table to calm traffic	Relocate signals cabinet to opposite side of the road where the pavement is wider. Relocate the cycle storage and refuse bin.	£ 5,000	Yes	To improve accessibility around the pedestrian crossing that is currently blocked by other infrastructure placed on the highway
5	Install an uncontrolled crossing point on Cold Bath Road adjacent Western Primary School	Install a build out and uncontrolled crossing point. May require amendments to the parking bays and extension of double yellow lines	£ 10,000	Yes	To provide a safer place to cross near the school in addition to providing some minor traffic calming and preventing illegal parking at the junction
6	Improve the crossing between the public right of way (PROW) on Green Lane and Ashville College	Provide a build out to improve visibility emerging from the Public Right Of Way and also slow traffic at the uncontrolled crossing point.	£ 10,000	Yes	To improve visibility for pedestrians and cyclists emerging from the bridleway
7	Review signing for cycle routes across the area	Review and improve signing of the cycle routes across Harrogate in line with the LCWIP	£ 25,000	Yes	To improve awareness of cycle routes across the network in Harrogate
8	20mph limit or zone outside Harrogate Grammar school on Arthurs Avenue (incorporating Cundall Way, Southway, Grasmere Crescent, Rossett Way, Arthurs Close, Arthurs Grove, Richmond Avenue, Richmond Road, Richmond Close, Richmond Holt)	Reduction in speed limit to 20mph with associated traffic calming	£ 75,000	Yes	To reduce speed outside the school and to enhance the local environment by making the streets feel safer
9	New cycle parking and improved public realm on Cold Bath Road.	Parklet or similar for cycle parking and places to sit/rest	£ 10,000	Yes	To enhance the local area and provide facilities to promote active travel.
10	Potential improvement to Nursery Lane to allow cyclists to use as an off-road leisure route	Investigate the potential of a cycle track order and associated infrastructure works to the surface. Third Party Land would be required.	£ 100,000	Yes	To provide additional off-road infrastructure for cyclists
			£ 585,000		

Items considered but to be delivered in future projects

Item Number	Proposals and/or Requests	Anticipated Improvement	Suggested for Delivery?	Reason
11	New crossing facility on Otley Road near Park Avenue/Beech Grove	Provide a crossing facility on Otley Road to link to the stray and Beech Grove	No	Will be considered alongside proposals being developed as part of West of Harrogate.
12	Pannal Ash Road resurfacing and traffic calming	Resurface the carriageway and provide traffic calming	No	Will be advertised for installation prior to resurfacing scheme if successful will be incorporated into the surfacing scheme being delivered in the 24/25 Financial Year.
13	Beech Grove layout changes at junction with Lancaster Road	Build outs to calm traffic and reduce car parking bays	No	We will be investing in the design of options to be considered as part of any changes brought about by West of Harrogate developments. Some funds may have to be set aside to allow for this work to take place.
14	20mph zones around Green Lane and Yew Tree Lane	Implementation of 20mph and associated traffic calming	No	Has been considered in separate report being considered at September ACC in response to the 20mph proposals from the Road Safety Campaign and petition. Funding for this would need to be secured separately to the NPIF package of works

Future Active Travel Strategy



THEMES IDENTIFIED FROM
THIS PROJECT CAPTURED



LOCAL TRANSPORT PLAN
DEVELOPMENT ONGOING



LOCAL CYCLING AND
WALKING INFRASTRUCTURE
PLAN



Next steps for the Otley Road Sustainable Transport Strategy.

- Review and consideration of feedback
- **November 23-** Report to Corporate Director of Environment, in consultation with the Executive Member of Highways and Transportation for approval to proceed with design work.
- **Jan 24- April 24** Design and development of delivery programme and final costs.
- Implementation from **May 24** onwards

Future of HAPARA

- ▶ New Council Structure
- ▶ Town/Parish Council
 - ▶ Remit?
- ▶ Still need for 'local' voice?

Future of HAPARA

- ▶ Need for new committee members
- ▶ End of the Association if none forthcoming?
 - ▶ Financial consequences?
 - ▶ Formal resolution?



Over to you!